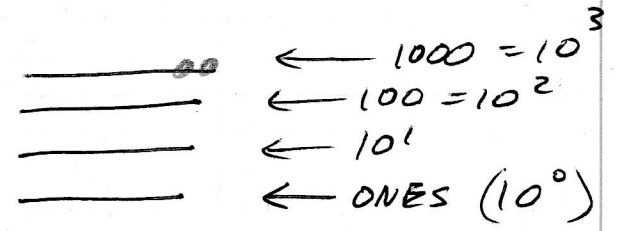


2-9-2016

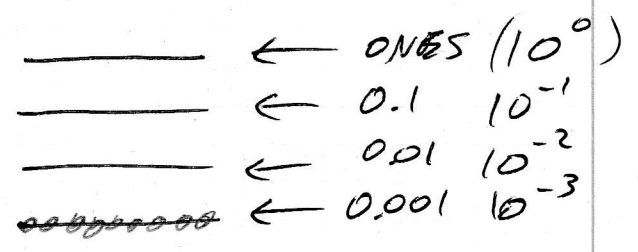
Ex. 5

1. (a) 2000 →

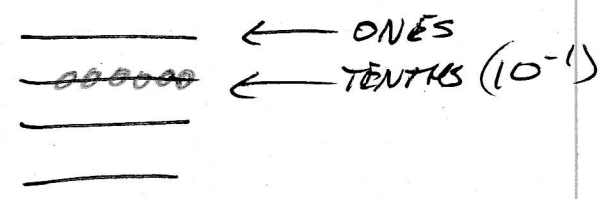


(b) 2 × 10³ ↗

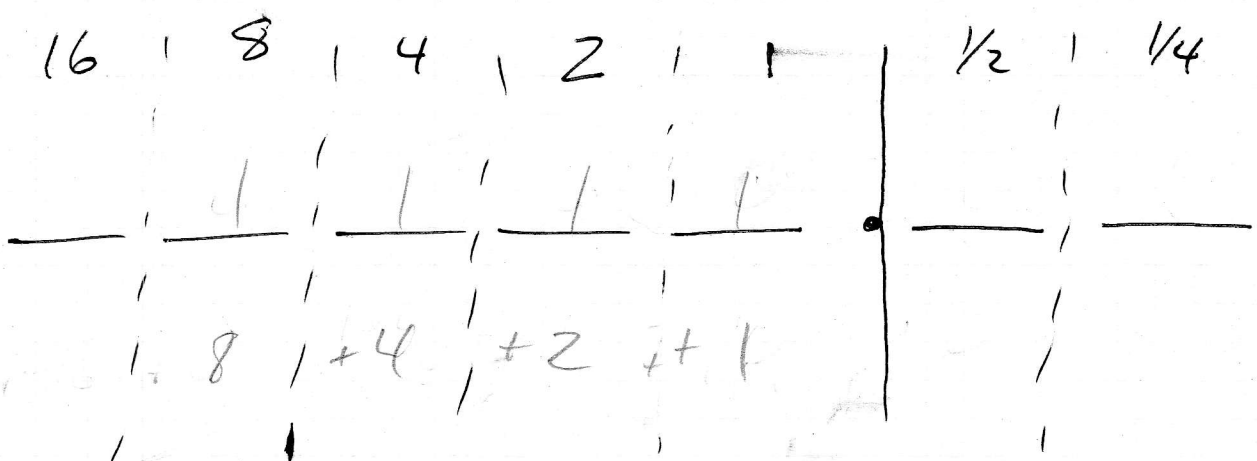
(c) 0.009
(9 × 10⁻³)



(d) 6/10 = $\frac{6}{10}$
= 0.6
~~6~~ = 6 × 10⁻¹

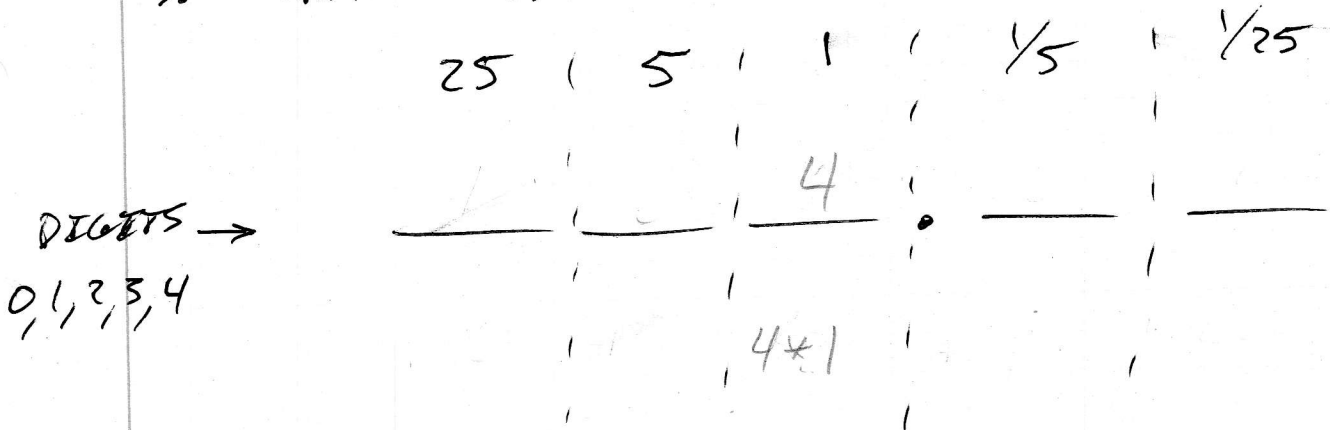


2. CHANGE BASE 2 TO BASE 10



- (a) 100₂ = 4₁₀
- (b) 10101₂ = 21₁₀
- (c) 0.01₂ = 0.25₁₀
- (d) 1111₂ = 15₁₀

3. CHANGE BASE 5 TO BASE 10



- (a) $12_5 = 7_{10}$
- (b) $100_5 = 25_{10}$
- (c) $0.04_5 = 0.16_{10}$
- (d) $4_5 = 4_{10}$

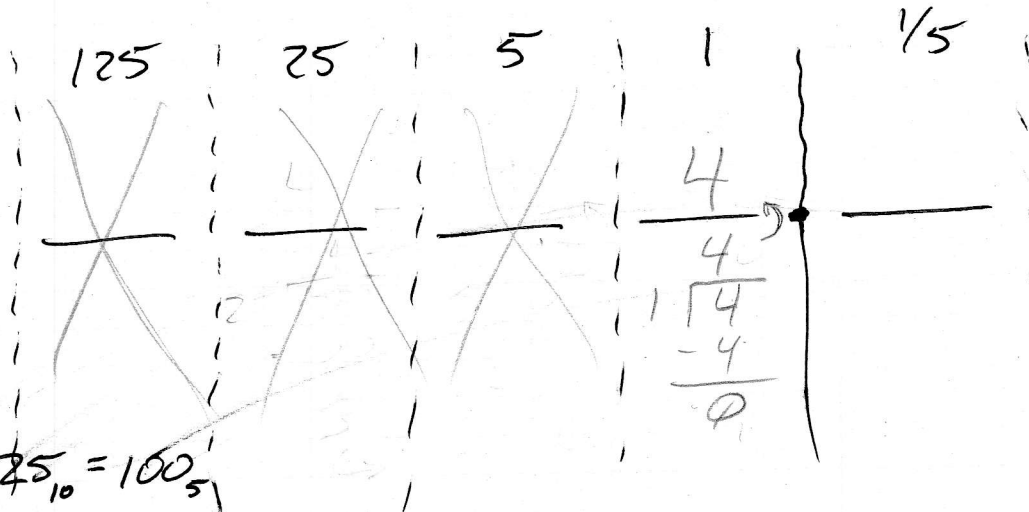
4. COUNTING IN BASE 3 ^(0, 1, 2)

- 0
- 1
- 2
- 10
- 11
- 12
- 20
- 21
- 22
- 100
- 101
- 102
- 110
- 111
- 112
- 120
- 121
- 122
- 200
- 201
- 202

5. COUNTING IN BASE 8 ^(0, 1, 2, 3, 4, 5, 6, 7)

- 0
- 1
- 2
- 3
- 4
- 5
- 6
- 7
- 10
- 11
- 12
- 13
- 14
- 15
- 16
- 17
- 20
- 21
- 22
- 23
- 24

6. CONVERT BASE 10 TO BASE 5 ^(0,1,2,3,4)



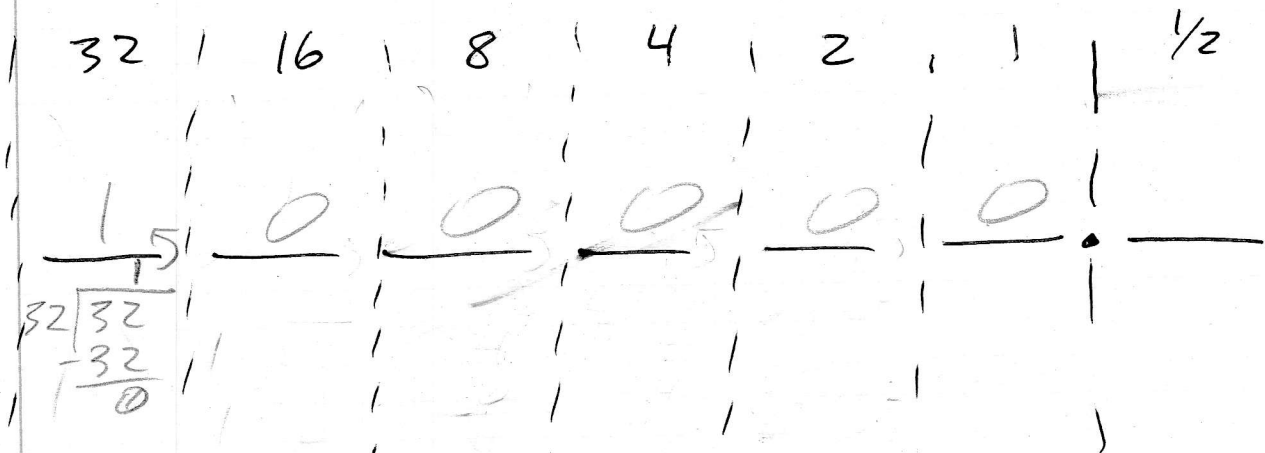
(a) $25_{10} = 100_5$

(b) $30_{10} = 110_5$

(c) $100_{10} = 400_5$

(d) $4_{10} = 4_5$

7. CONVERT BASE 10 TO BASE-2 ^(0,1)



(a) $6_{10} = 110_2$

(b) $14_{10} = 1110_2$

(c) $20_{10} = 10100_2$

(d) $32_{10} = 100000_2$